

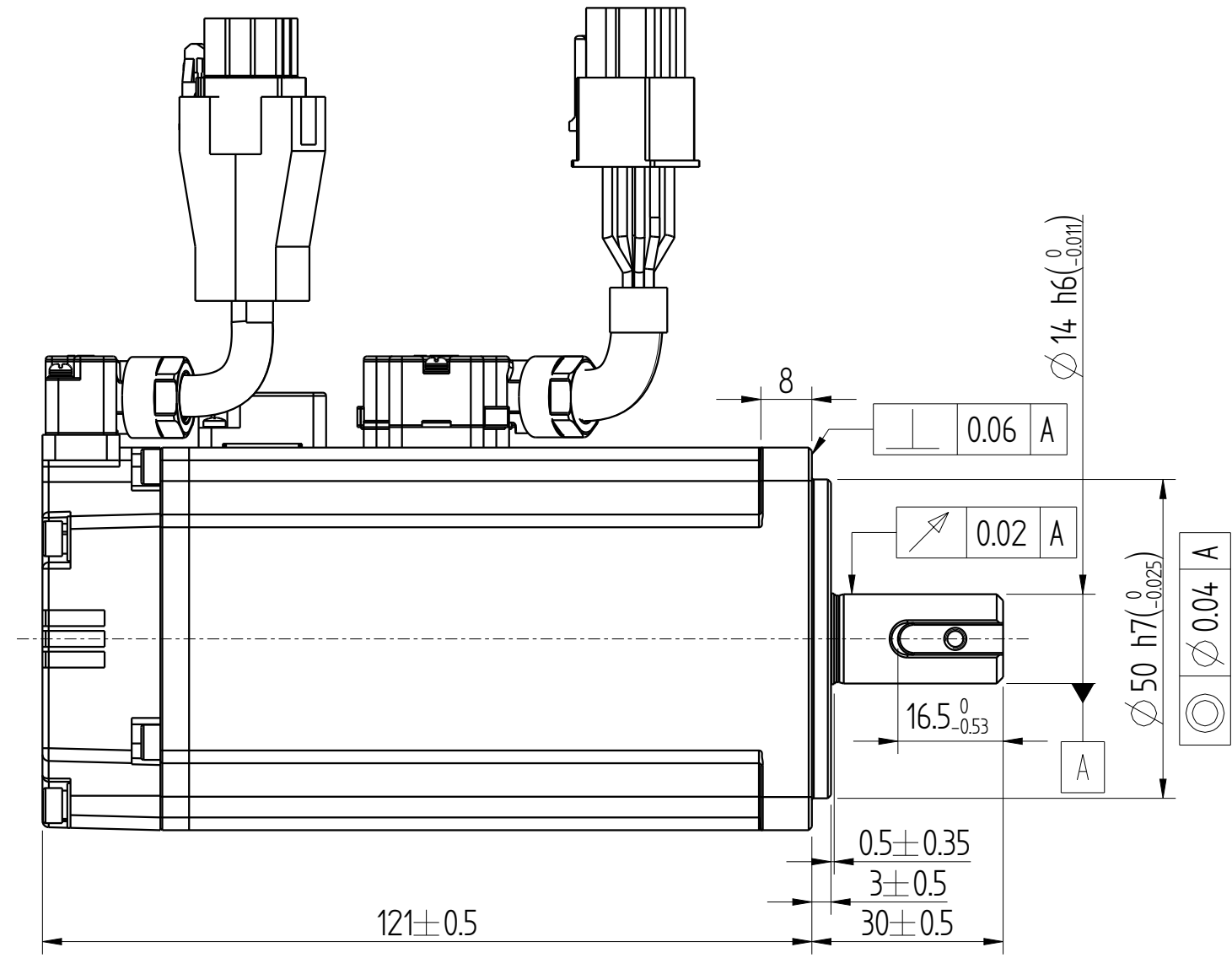
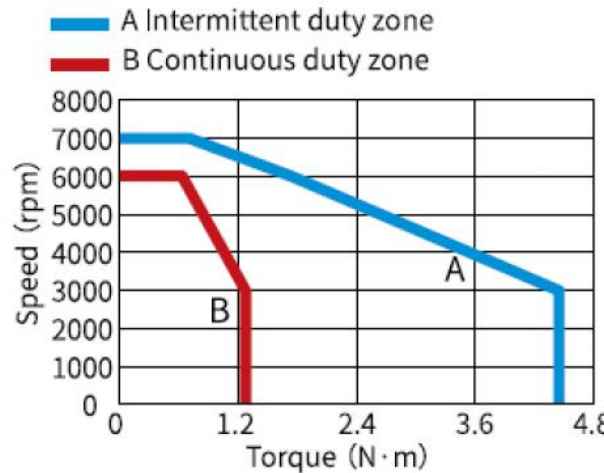
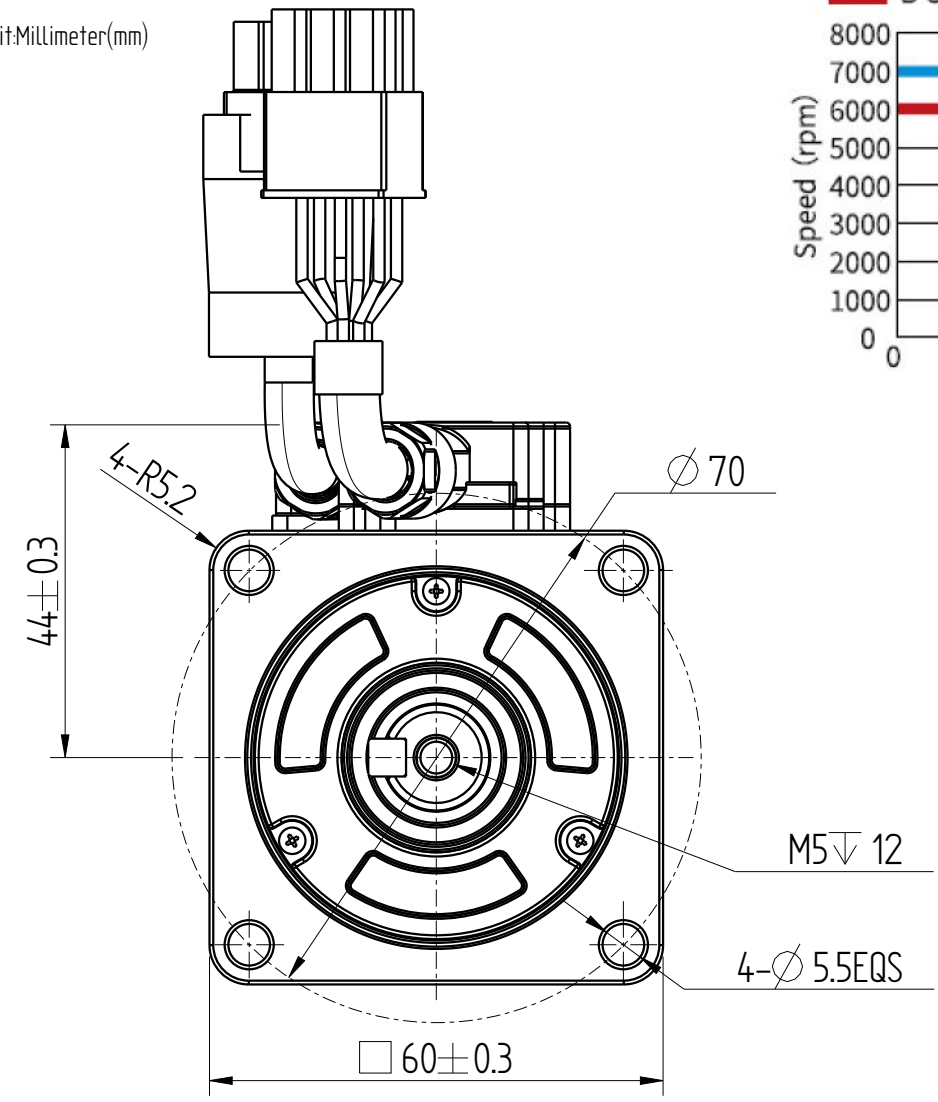
Copyright:Copyright infingmengt reserved

INOVANCE

A  
B  
C  
D  
E  
F  
A3

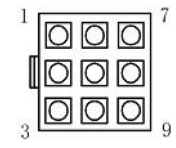
| Amendment | Description |
|-----------|-------------|
|           |             |

Unit:Millimeter(mm)



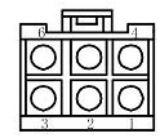
| Basic function parameters        |           |
|----------------------------------|-----------|
| Rated power kW                   | 0.4       |
| Rated voltage V                  | 220       |
| Rated current A                  | 2.5       |
| Peak current at rated speed A    | 9.8       |
| Rated torque Nm                  | 1.27      |
| Peak torque at rated speed Nm    | 4.45      |
| Rated speed rpm                  | 3000      |
| Max speed rpm                    | 7000      |
| Rotor inertia kg·cm <sup>2</sup> | 0.157±10% |
| Encoder resolution               | 23bit     |
| Insulation class                 | F(155)    |
| Protection class                 | IP67      |
| Static torque of brake Nm        | ≥15       |
| Brake power supply V             | DC24±10%  |
| Brake backlash°                  | ≤1        |
| Duty cycle                       | S1        |
| Radial load N                    | ≤245      |
| Axial load N                     | ≤74       |

Encoder adapter connector



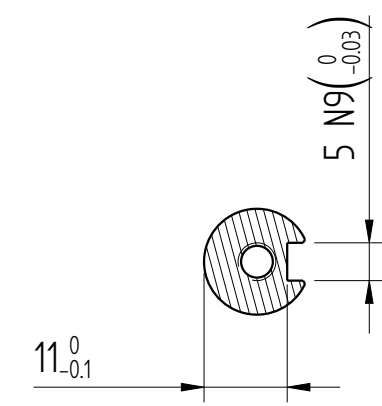
| 9pin terminal | 3    | 6      | 1     | 4     | 9    | 8      | 7          |
|---------------|------|--------|-------|-------|------|--------|------------|
| Core color    | blue | purple | brown | black | red  | orange | groud wire |
| definition    | PS+  | PS—    | DC+   | DC—   | +5V  | 0V     | shield     |
|               | Pair |        | Pair  |       | Pair |        |            |

Power wire adapter connector

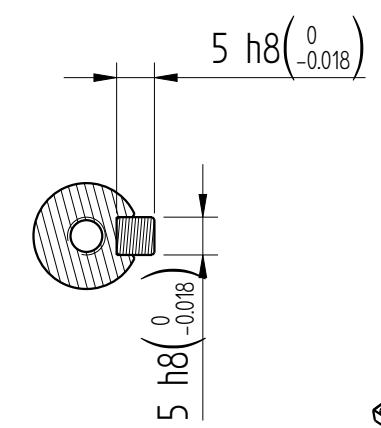


| Power wire adapter connector |            |     |        |       |       |      |
|------------------------------|------------|-----|--------|-------|-------|------|
| 6pin terminal                | 5          | 4   | 2      | 1     | 3     | 6    |
| Core color                   | chartreuse | red | yellow | white | brown | blue |
| definition                   | PE         | W   | V      | U     | BK+   | BK—  |

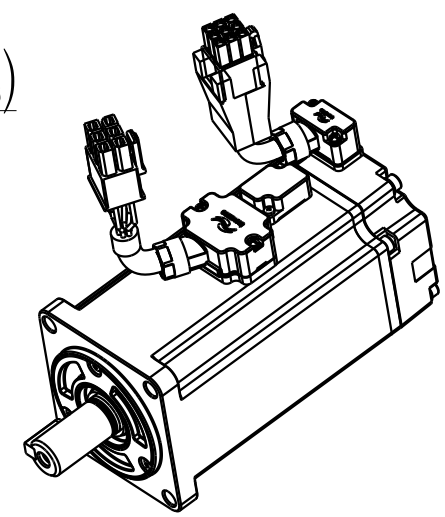
note:  
1、The lead wire cable length about 300mm



Dimension of shaft end



Dimension of shaft end with key



|                 |               |            |          |                       |       |         |             |                           |
|-----------------|---------------|------------|----------|-----------------------|-------|---------|-------------|---------------------------|
|                 |               |            |          | Motor Outline Drawing |       |         | 0111A179-WX |                           |
| B01             | Replace       | /          | 20250527 |                       |       |         |             |                           |
| Version         | Change method | Changed by | Date     |                       |       |         |             |                           |
| Design          | /             |            |          | /                     |       |         | Mark        |                           |
| Check           | /             |            |          |                       |       |         |             |                           |
| Craft           | /             |            |          |                       |       |         |             |                           |
| Verify          | /             |            |          | Weight                | Scale | Version | Page 1 of 1 |                           |
| Standardization | /             |            |          | 148kg                 | 12    | B01     | Model       | MS1H1-40B30CB-A334R-S-INT |
| Approve         | /             |            |          |                       |       |         |             |                           |